

The
Millstream
Tower

BEROL QUARTER • TOTTENHAM HALE N17

APPROX. 3,269 SQ. FT. FOR RETAIL, LEISURE OR F & B USE WWW.BEROLQUARTER.CO.UK



Berol Quarter

London's most exciting
regeneration project, with
over £1bn of funding and
1,000 new homes delivered

Total transform is well underway.

A new neighbourhood awaits

Tottenham Hale is about to become home to a whole new neighbourhood, with over 10,000 new homes being delivered over the next few years. With a brand new public square, this promises to be an exciting space for local residents and businesses to grow into.

Written in History

The distinctive yellow Berol Pencil is a true icon, and was developed at the Berol Pencil Factory in Tottenham Hale, opening in 1907. The outbreak of World War II in 1939 saw the factory pause pencil manufacture and instead produce secret military equipment. Pencil manufacture recommenced in 1946 and in 1990's the factory was converted to provide managed workspace.

The factory is being sympathetically refurbished to include a new walkway at ground floor to link the Berol Yard with Ashley Road and the Berol Link into Down Lane Park.



One of the best connected
places in North London
with high frequency
Underground and Rail
services to central London



A vibrant new
neighbourhood for creative
traders and workers with
super fast broadband



Direct access to over
520 acres of open space
to explore and enjoy



Brand-new commercial
units suitable for a range
of retail, leisure and
workspace uses



The Area

Tottenham is one of London's most diverse and vibrant districts

The bustling main roads and Tottenham Hale Station are only minutes walk away from tranquil nature reserves of Walthamstow Wetlands – a free nature reserve with 13 miles of paths to explore across an untamed, wildlife-friendly site. The new pedestrian thoroughfare of Berol Link will directly connect Berol Quarter to Down Lane Park. This much-loved local park provides a range of excellent sports and recreation facilities.

Local brewery Beavertown serves beer at Tottenham Hotspur Stadium, attracting visitors from all over the world.



Transformational regeneration is well underway

- 1 Berkeley Square Developments**
Locally Listed Berol House, providing 30,000 sq. ft. of workspace
- 2 Berkeley Square Developments**
1 Berol Yard providing 13,327 sq. ft. of new commercial space forming part of 166 PRS apartment scheme
- 3 Notting Hill Genesis**
279 new homes and new offices
- 4 Argent**
New Central public square with cinema, restaurants, coffee shops and health centre and over 1,000 new homes
- 5 Berkeley Square Developments**
315 new private and rental homes and retail use
- 6 Berkeley Square Developments**
Berol Link comprising two new commercial units and forming part of a 104 unit residential scheme
- 7 Millstream Tower**
Newlon Housing Trust scheme, comprising 128 homes and new commercial unit
- 8 Argent**
130 new homes – all shared ownership units. With ground floor commercial space with flexible use for cafes, restaurants and shops facing onto Station Road and The Hale
- 9 Argent**
Welbourne - 131 new council homes with a mix of one, two and three-bedroom flats arranged over three blocks
- 10 Unite**
Student accommodation providing over 1,100 beds for students









Connections

Tottenham Hale is one of the best connected places in London, with a 24 hour tube service providing connections to the West End within 16 minutes and just 11 minutes to King Cross. The refurbished station provides trains to the City of London and Stanstead Airport every 15 minutes and trains to Stratford International only 12 minutes away. The integrated bus station offers more local connections across London and beyond.

The Berol Quarter is a one minute walk from the station and offers large numbers of bicycle storage for those travelling on the cycle-superhighway, which passes the site and runs all the way to Liverpool Street Station in the City of London.



TOTTENHAM HALE

- Victoria Line 
- Elizabeth Line 
- Crossrail 2 (proposed) 
- Overground 

HARINGEY

ISLINGTON

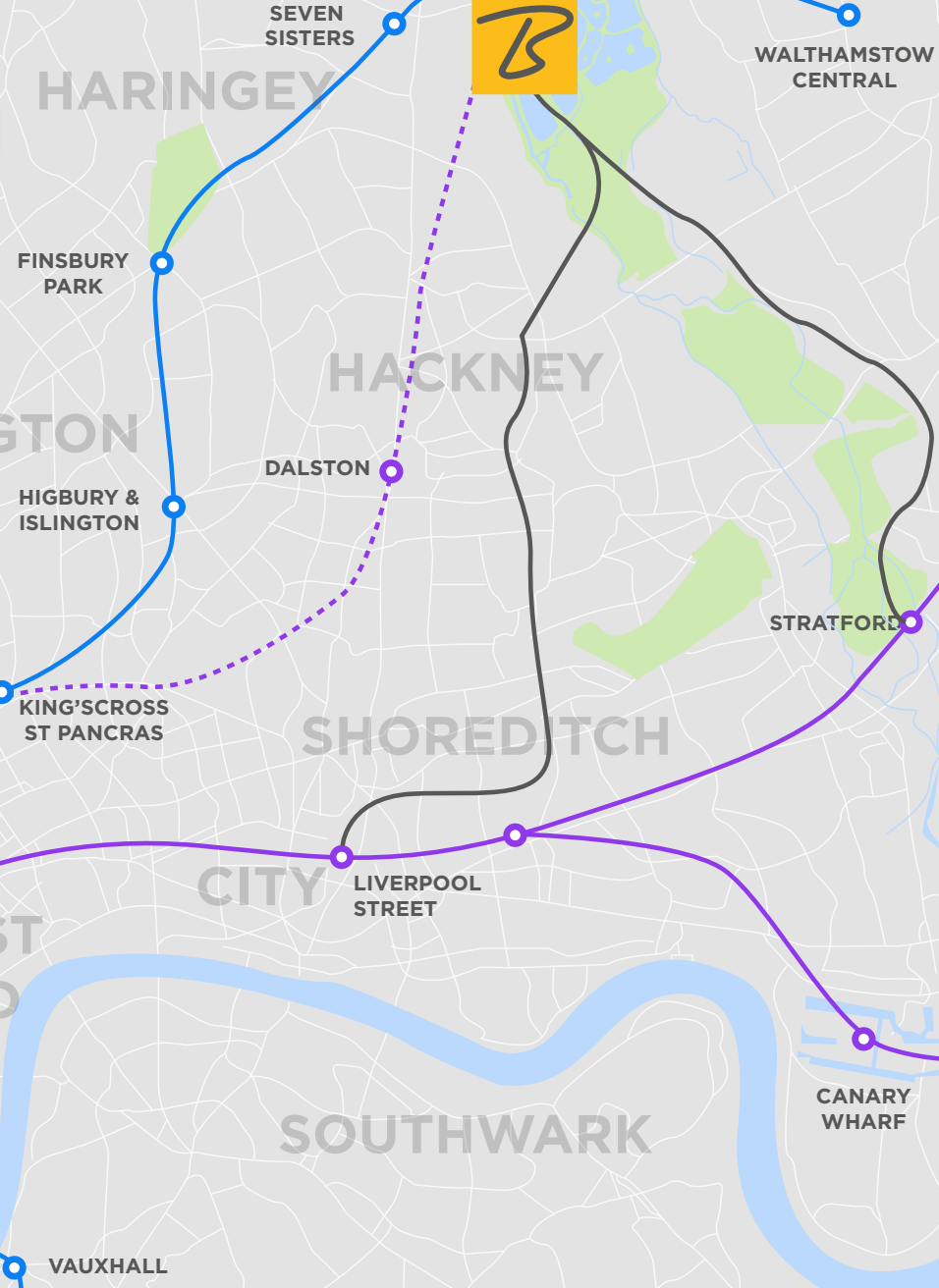
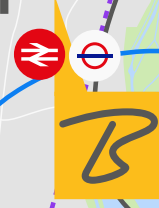
HACKNEY

SHOREDITCH







WEST END

CITY






SOUTHWARK



Train

-  Liverpool Street
14 mins
-  Stratford
12 mins
-  Hackney Downs
6 mins
-  Tottenham Hale
-  London Stansted Airport
31 mins
-  Cambridge
59mins

Tube

-  Victoria
19 mins
-  Oxford Circus
16mins
-  Kings Cross
St Pancras
11 mins
-  Tottenham Hale
-  Walthamstow
Central
4 mins

The Building





Approximately 3,269 sq. ft. of Class E space suitable a range of retail, leisure and F & B uses. The unit is excellently situated in the heart of Tottenham Hale District Centre, available for immediate occupation with the potential for a mezzanine. Prominent location on the junction of The Hale and Station Road and opposite the new Heart of the Hale development by Argent Related and associated central public square.



**Available
Immediately**



**Flexible Leases
Available**



**BREEAM
Very good**



**Located in
the Heart of
Tottenham Hale**



**Leisure and
Retail Opportunity**



**Direct and level
access to station**



Local Car Club



The Millstream Tower

ACCOMODATION

Ground Floor (Approx. Floor Area)

278.9 sq. m. / 3,002 sq. ft.

Mezzanine (Approx. Floor Area)

24.8 sq. m / 267 sq. ft.

SPECIFICATION

Mechanical

63mm dia gas supply

600mm high louvred band all around perimeter

Extract duct to roof level

Electrical

1 x 90KVA Supply

Public Health

1 No 32mm dia cold water feed

4 No 110 mm dia capped drainage connections

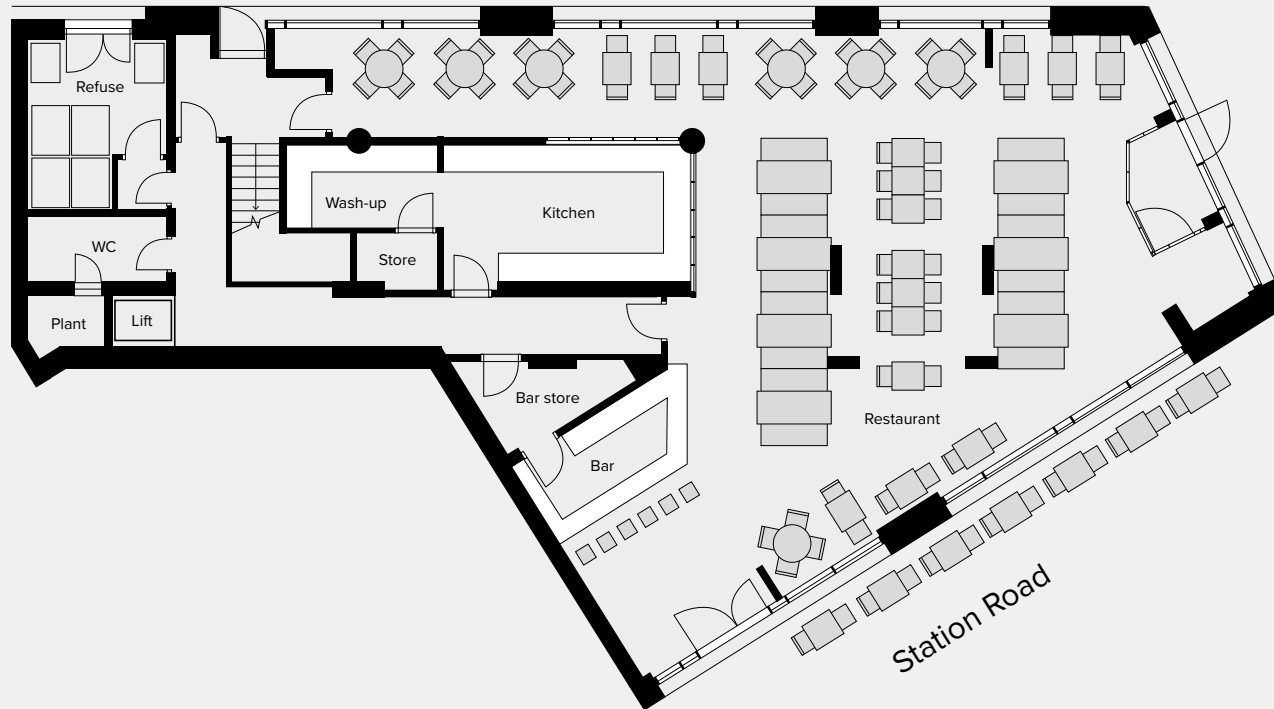
Height

Ground Floor: TBC

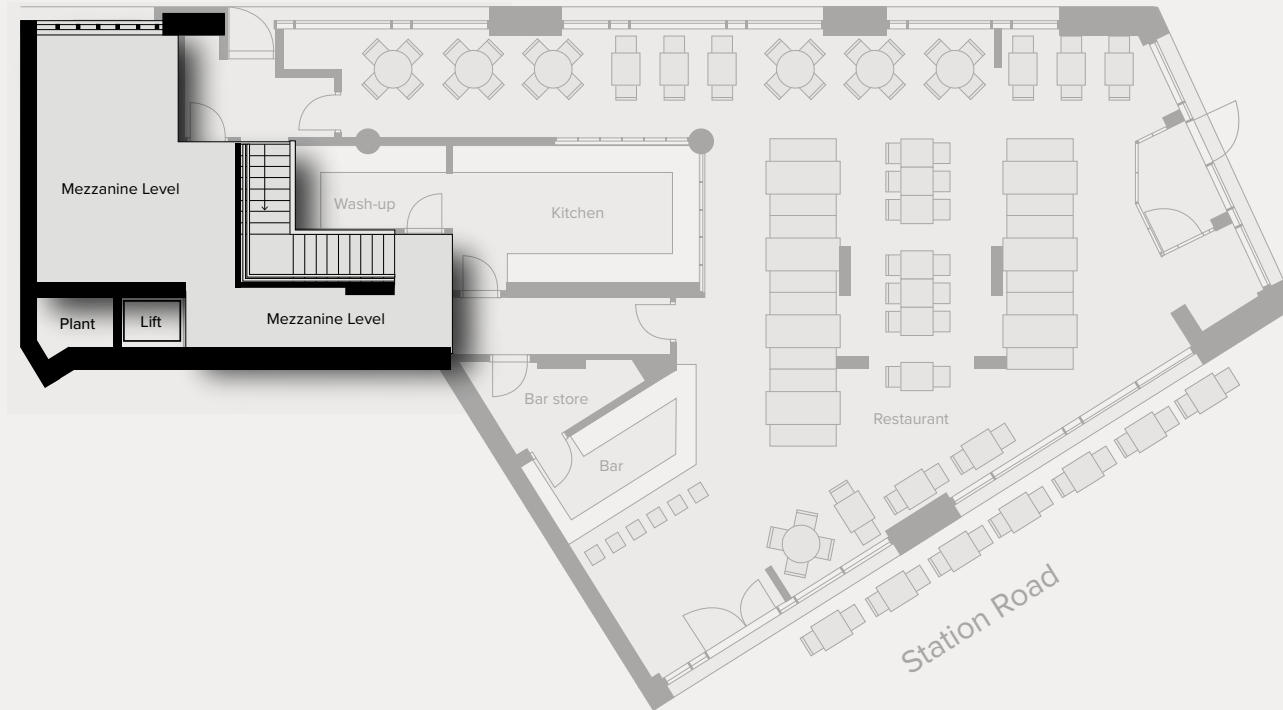
Mezzanine: TBC



The Millstream Tower



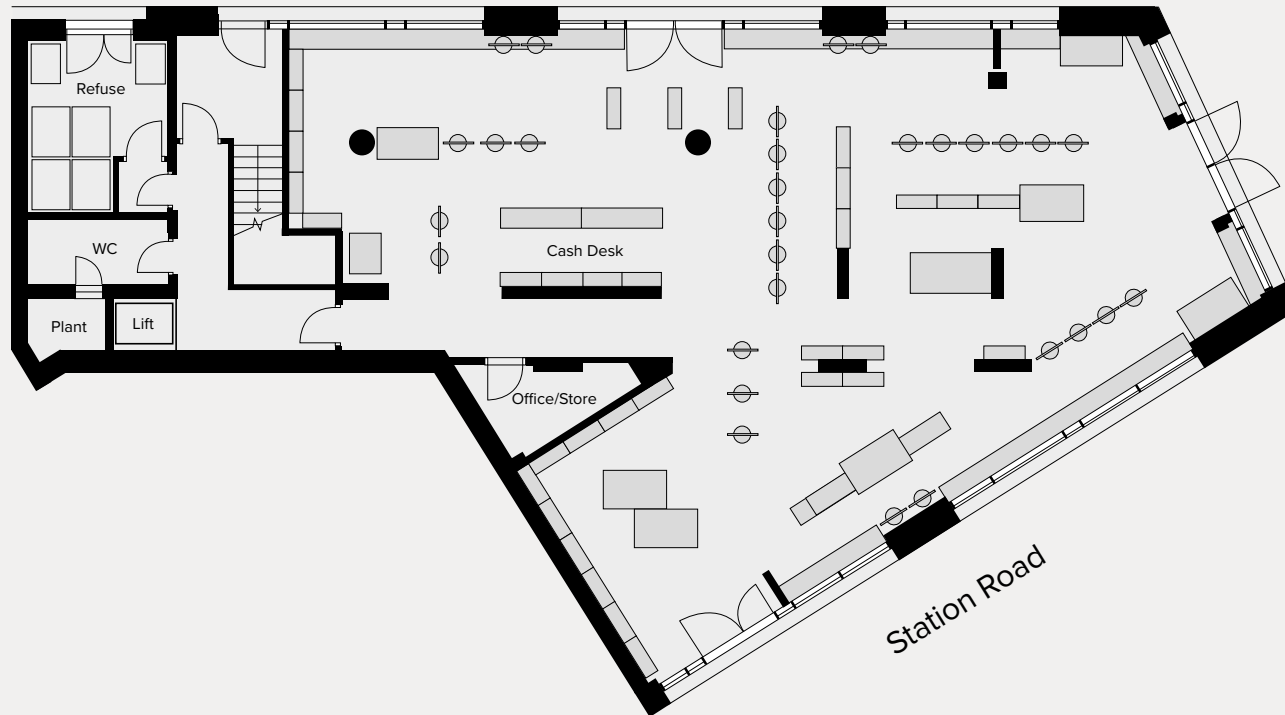
Ground Floor Restaurant Layout



Mezzanine Restaurant Layout



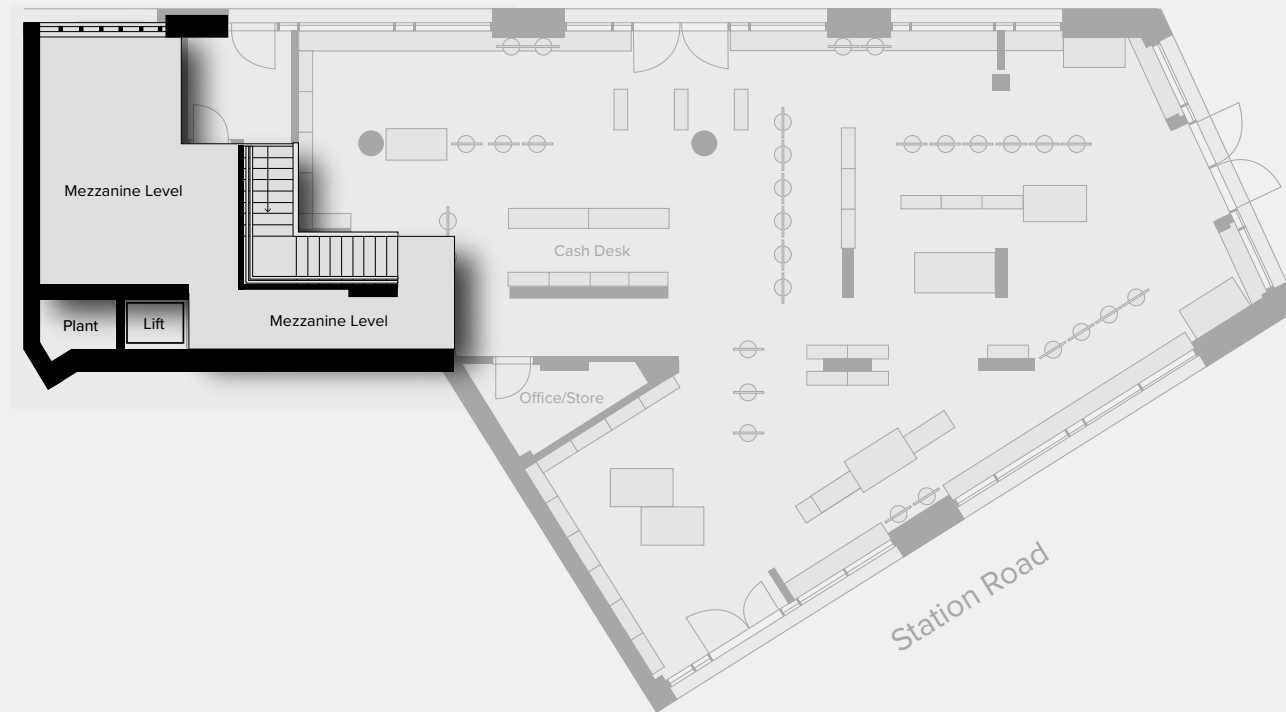
The Millstream Tower



Ground Floor Food & Beverage Layout



The Millstream Tower



Mezzanine Food & Beverage Layout

QUOTING TERMS AND VIEWINGS

Strictly via Sole Agents:

CFC
020 3370 4334

John Giblin
07867 505 604
john@cfcommercial.co.uk

Annabel Magnay
07722 008 841
annabel@cfcommercial.co.uk

Berol Quarter

Ashley Road • Tottenham Hale • London N17
www.berolquarter.co.uk

CF Commercial for themselves and for the lessors of this property whose agents they are give notice that: (1) the particulars are set out as a general outline only for the guidance of intending lessees, and do not constitute part of an offer or contract; (2) all descriptions, dimensions, references to condition and necessary permissions for use and occupation, and other details are given in good faith and are believed to be correct, but any intending lessees should not rely on them as statements or representations of fact but satisfy themselves by inspection or otherwise as to the correctness of each of them; (3) no person in the employment of CF Commercial has any authority to make or give any representation or warranty whatever in relation to this property. March 2022.
Branding and brochure by Moyo Creative. www.moyocreative.com