

One  
Berol  
Link

BEROL QUARTER • TOTTENHAM HALE N17

3,000 SQ. FT. NEW RETAIL & LEISURE UNIT [WWW.BEROLQUARTER.CO.UK](http://WWW.BEROLQUARTER.CO.UK)







# Berol Quarter

London's most exciting  
regeneration project, with  
over £1bn of funding and  
1,000 new homes delivered

#### **Total transform is well underway.**

##### **A new neighbourhood awaits**

Tottenham Hale is about to become home to a whole new neighbourhood, with over 10,000 new homes being delivered over the next few years. With a brand new public square, this promises to be an exciting space for local residents and businesses to grow into.

#### **Written in History**

The distinctive yellow Berol Pencil is a true icon, and was developed at the Berol Pencil Factory in Tottenham Hale, opening in 1907. The outbreak of World War II in 1939 saw the factory pause pencil manufacture and instead produce secret military equipment. Pencil manufacture recommenced in 1946 and in 1990's the factory was converted to provide managed workspace.

The factory is being sympathetically refurbished to include a new walkway at ground floor to link the Berol Yard with Ashley Road and the Berol Link into Down Lane Park.



**One of the best connected places in North London with high frequency Underground and Rail services to central London**



**A vibrant new neighbourhood for creative traders and workers with super fast broadband**



**Direct access to over 520 acres of open space to explore and enjoy**



**Brand-new commercial units suitable for a range of retail, leisure and workspace uses**



# The Area

## Tottenham is one of London's most diverse and vibrant districts

The bustling main roads and Tottenham Hale Station are only minutes walk away from tranquil nature reserves of Walthamstow Wetlands – a free nature reserve with 13 miles of paths to explore across an untamed, wildlife-friendly site. The new pedestrian thoroughfare of Berol Link will directly connect Berol Quarter to Down Lane Park. This much-loved local park provides a range of excellent sports and recreation facilities.

Local brewery Beavertown serves beer at Tottenham Hotspur Stadium, attracting visitors from all over the world.



# Transformational regeneration is well underway

- 1 Berkeley Square Developments**  
Locally Listed Berol House, providing 30,000 sq. ft. of workspace
- 2 Berkeley Square Developments**  
1 Berol Yard providing 13,327 sq. ft. of new commercial space forming part of 166 PRS apartment scheme
- 3 Notting Hill Genesis**  
279 new homes and new offices
- 4 Argent**  
New Central public square with cinema, restaurants, coffee shops and health centre and over 1,000 new homes
- 5 Berkeley Square Developments**  
315 new private and rental homes and retail use
- 6 Berkeley Square Developments**  
Berol Link comprising two new commercial units and forming part of a 104 unit residential scheme
- 7 Millstream Tower**  
Newlon Housing Trust scheme, comprising 128 homes and new commercial unit
- 8 Argent**  
130 new homes – all shared ownership units. With ground floor commercial space with flexible use for cafes, restaurants and shops facing onto Station Road and The Hale
- 9 Argent**  
Welbourne - 131 new council homes with a mix of one, two and three-bedroom flats arranged over three blocks
- 10 Unite**  
Student accommodation providing over 1,100 beds for students



A blurred high-speed train in a modern station with a red pillar.

# Connections

Tottenham Hale is one of the best connected places in London, with a 24 hour tube service providing connections to the West End within 16 minutes and just 11 minutes to King Cross. The refurbished station provides trains to the City of London and Stanstead Airport every 15 minutes and trains to Stratford International only 12 minutes away. The integrated bus station offers more local connections across London and beyond.

The Berol Quarter is a one minute walk from the station and offers large numbers of bicycle storage for those travelling on the cycle-superhighway, which passes the site and runs all the way to Liverpool Street Station in the City of London.



# TOTTENHAM HALE

- Victoria Line
- Elizabeth Line
- Crossrail 2 (proposed)
- Overground

HARINGEY

ISLINGTON

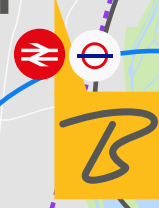
HACKNEY

SHOREDITCH

CITY

WEST END

SOUTHWARK

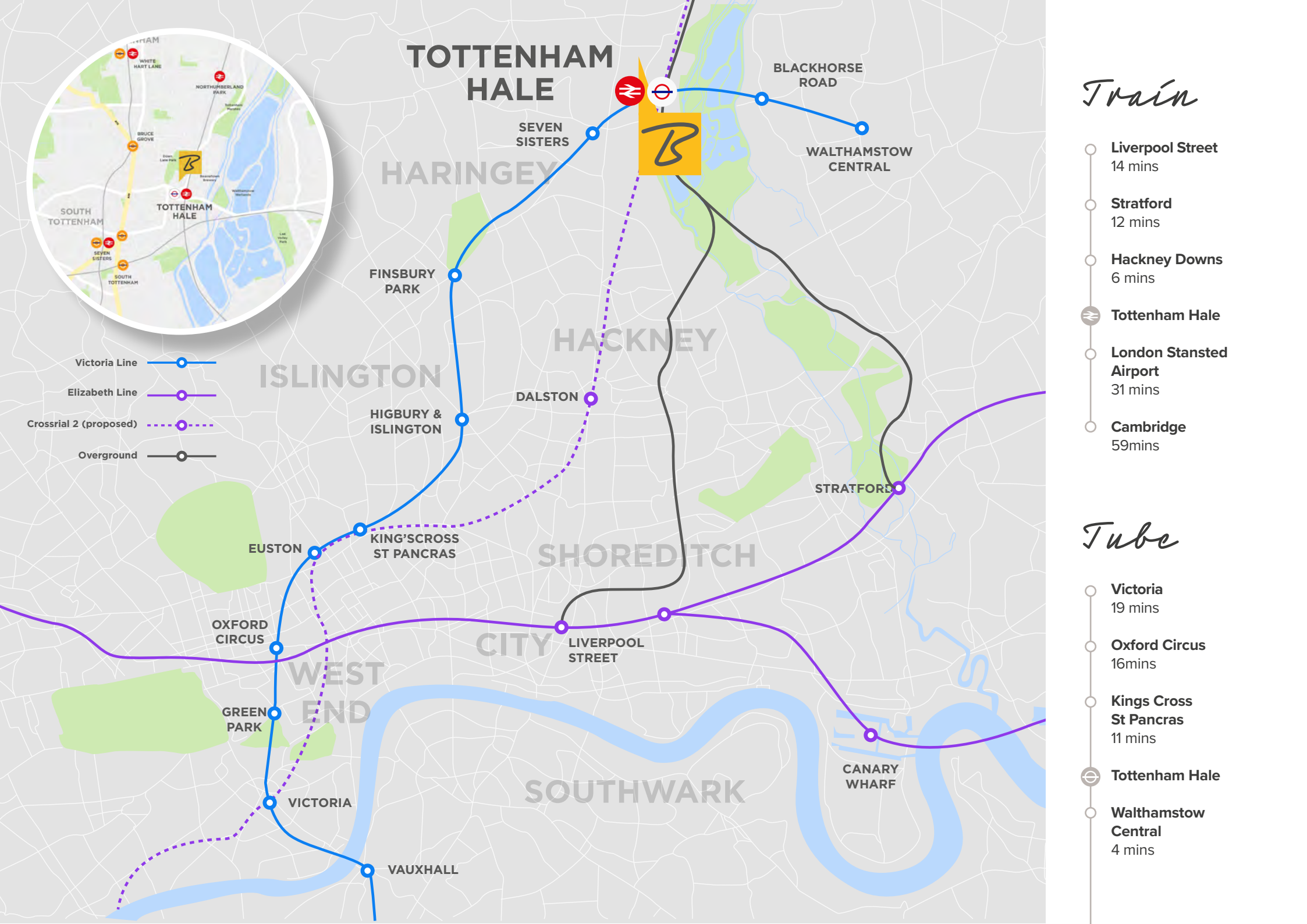


## Train

- Liverpool Street  
14 mins
- Stratford  
12 mins
- Hackney Downs  
6 mins
- Tottenham Hale
- London Stansted Airport  
31 mins
- Cambridge  
59mins

## Tube

- Victoria  
19 mins
- Oxford Circus  
16mins
- Kings Cross  
St Pancras  
11 mins
- Tottenham Hale
- Walthamstow  
Central  
4 mins







**3,000sqft of Class E prime retail space on Ashley Road, with shopfront glazing and external terrace for seating. Double height space with the potential for a large mezzanine. Ideal opportunity for a new events space adjacent to the new Berol Link and Down Lane Park.**



**Available  
Immediately**



**Flexible Leases  
Available**



**BREEAM  
Very good**



**Next to  
Down Lane Park**



**Leisure and  
Retail Opportunity**



**Leisure and  
Retail Opportunity**



**Direct and level  
access to station**



**Local Car Club**



# One Berol Link

## ACCOMODATION

### Ground Floor

278.7 sq. m. / 3,000 sq. ft.

---

## SPECIFICATION

### Mechanical

63mm dia gas supply

---

90mm dia fire supply

---

600mm high louvred band all around perimeter

---

Extract duct to roof level

---

### Electrical

1 x 90KVA / 200 AMP supply

---

### Public Health

1 No 32mm dia cold water feed

---

3 No 110 mm dia capped drainage connections

---

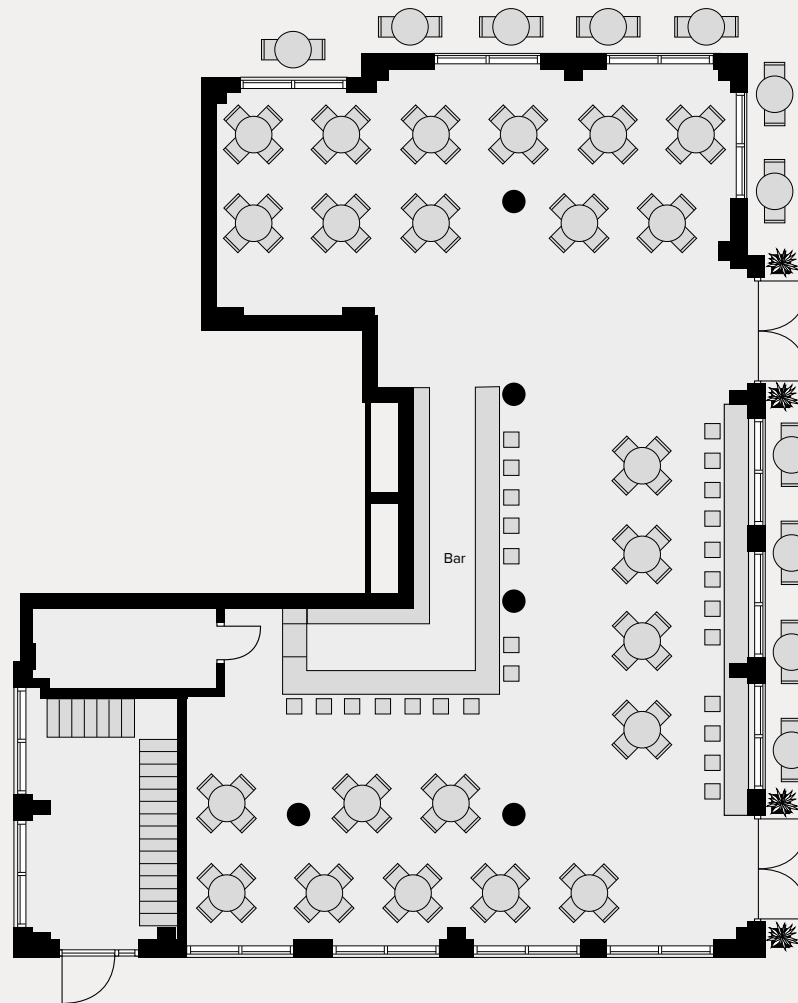
### Height

6.800m

---



# One Bevol Link



Ashley Road



*Indicative  
Bar Layout*

## QUOTING TERMS AND VIEWINGS

Strictly via Sole Agents:

**CFC**  
020 3370 4334

**John Giblin**  
07867 505 604  
john@cfcommercial.co.uk

**Annabel Magnay**  
07722 008 841  
annabel@cfcommercial.co.uk

---

*Berol Quarter*

**Ashley Road • Tottenham Hale • London N17**  
**[www.berolquarter.co.uk](http://www.berolquarter.co.uk)**

CF Commercial for themselves and for the lessors of this property whose agents they are give notice that: (1) the particulars are set out as a general outline only for the guidance of intending lessees, and do not constitute part of an offer or contract; (2) all descriptions, dimensions, references to condition and necessary permissions for use and occupation, and other details are given in good faith and are believed to be correct, but any intending lessees should not rely on them as statements or representations of fact but satisfy themselves by inspection or otherwise as to the correctness of each of them; (3) no person in the employment of CF Commercial has any authority to make or give any representation or warranty whatever in relation to this property. March 2022.  
Branding and brochure by Moyo Creative. [www.moyocreative.com](http://www.moyocreative.com)